



- Specialist Engineering
- Procurement,
- Project Management
- Field Support And Maintenance Services To The Oil & Gas,
- Power And Manufacturing Industry



ABOUT US/ OVERVIEW

Willoch Technical Consultancy is a Nigerian company set up to provide specialist engineering, procurement, project management, field support and maintenance services to the Oil & Gas, power and manufacturing industry in the Gulf of Guinea.

We offer turn-key services based on proven skills, experience and resources that enable us to deliver the right comprehensive solutions to address challenging projects for our clients. This is backed with responsive technical support when required.

Our primary focus and is client satisfaction and to enhance trust. We understand the oil and gas industry and pay close attention to our clients so that we can propose and provide solutions that suit their specific needs and help meet their business objectives, while guaranteeing the highest standards of quality and service. Our drive is one of continuous development and innovative technology which allows us to evolve in tandem with the industry.

Willochs' carefully planned, cost-effective approach helps optimize operational reliability and safety while avoiding asset failure, maintenance hiccups and work disruptions. Our integrated solutions come from a diligent focus to continually improve value.

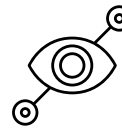
We are building a reputation for setting the standard in operational integrity and excellence, and employing our services sends a clear message of responsibility and quality to stakeholders. As a company we pride ourselves in being proactive and visionary with the progressive development of our competences to fuel our ability to consistently exceed client expectations while staying grounded with the ongoing focus on improving our internal systems and services.





CORPORATE MISSION

To deliver exceptional services in a safe, efficient, and environmentally sound manner supporting clients derive optimal benefit from their assets by consistently exceeding expectations for quality and responsiveness.



CORPORATE VISION

To be globally recognized among the foremost EPCI companies in the Oil & Gas Industry through innovation and maintaining high standards of safety and quality, with people being our most valued.

CORE VALUES



Build Teamwork

Accomplish tasks and inspire technical excellence



Integrity

Committed to do the right thing without exception



Diligence

Maintain balance of skill, effort and perseverance



Commitment to Quality

Attention to detail to produce quality outputs



Accountability

Fortitude to take 100% ownership



Excellence

Chase perfection, catch excellence



Active Communication

Creating a transparent work environment

- Delivering results, reliability, & rock-solid dependability.
- Precision in every task.
- Where excellence meets smart solutions
- Ingenuity in optimizing the life and reliability of your assets
- Passion that builds excellence.



01

Delivering results, reliability, and rock-solid dependability.

02

Where excellence meets smart solutions

03

Passion that builds excellence.

04

Precision in every task.

05

Ingenuity in optimizing the life and reliability of your assets

OUR PEOPLE

Our Management Team is a combination of professionals with competencies that cut across various sectors of the oil and gas industry. They also bring with them a comprehensive and excellent repertoire of experience derived from many years of operations and management.

We believe in our employees as a long-term investment and take pride in ceaselessly investing in them which serves a pool of updated professionals across all disciplines, ensuring a seamless delivery of superior value to our clients in compliance with the highest standards and best practices within the oil and gas, power and manufacturing sector. The goal is a safe and positive work environment with development opportunities for all our staff.



Results Driven Synergy

Willoch seeks to harness the capabilities of highly proficient and passionate team players, in close collaboration with clients to deliver exceptional value. The development of long-term trust-based relationships with clients effectively helps them achieve their goals. With consistent and transparent communication and proactive stakeholder engagements, we guarantee alignment to clients' processes, schedule, and ROI expectations.

Our track record and reputation of delivering innovative and cost-effective solutions comes from an end-to-end underlying dedication to excellence which adds value to our client's business through enhanced reliability and reduced downtime.

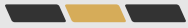
Our strategic technical alliances in our areas of focus are geared towards ensuring our clients derive maximum value from doing business with us.



Trusted to Start & Finish with Safety

At Willoch, we challenge each other to uphold the highest level of safety - not for the sake of a checkbox, but to look out for everyone involved on the job. We rely on each other to get the job done for our clients and to do it with the team's safety in mind.

We incorporate our culture of safety into all aspects of our services. We uphold our safety values in all of our projects, regardless of where we are. We extend our culture of safety to our families and our communities. We don't just talk about safety, we live it



Sustainability

Willoch integrates sustainability into our overall operations through the development and implementation of programs that not only promote and ensure corporate responsibility but also protect health, safety, and environment.

We believe that Actions Speak Louder Than Words. Thus, when all levels of management give the highest priority to corporate responsibility and safety, sustainability is more attainable



SERVICES



Engineering

Willoch focuses on prompt delivery of required functionality; with close attention to quality cost-efficiency and adherence to industry standards. Our engineers have extensive industry experience and consistently strive to improve their performance in all aspects of their designs, through training, sharing and implementing best practices.

Safety and efficiency guides our every step, which means clients know they can trust that the design optimization and project execution is handled with proficiency in mind, resulting in a strong support to construction teams because our design engineers genuinely understand the challenges in the field and are able to translate that field knowledge into functional drawings.

We offer full engineering design and 3D modelling solutions to align designs with existing requirements as well as the projects overall vision, from conceptual through to detailed design and execution across a wide range of disciplines:

- | | | |
|--------------|-----------------------------|--------------------------|
| ▪ Process | ▪ Piping | ▪ Technical Safety |
| ▪ Mechanical | ▪ Instrumentation & Control | ▪ Pipeline |
| ▪ Electrical | ▪ Civil & Structural | ▪ Flow Assurance Studies |

Willoch also utilizes 3D laser scan technology to enable accurate designs with fewer site visits, providing designers unprecedented flexibility to propose and evaluate potential alterations.





Procurement

Willoch has the expertise to guarantee a strong and reliable supply chain for projects. Our optimized procurement services ensure timely delivery of the precise equipment and materials, thereby avoiding costly delays and the associated consequences. With our wide network of manufacturers, we ensure that materials are purchased at the best competitive prices via the most appropriate channels to any location in Nigeria.

Our centralized management system approach enables a clear overview of your procurement processes with good communication, effective control of materials and quality delivery; thereby eliminating unnecessary costs and delays. Our sourcing and procurement services cover:





Operations & Maintenance (Asset Integrity)

Willoch aims to maintain your asset in a fit-for-service condition while maximizing its life and profitability in the most reliable, safe, cost-effective, and schedule-driven manner with our operations and maintenance support.

We provide asset support solutions are proven to drive down inspection and repair costs whilst improving reliability and operational safety. It covers operational readiness, asset management and modifications, general maintenance and enhancement works, and decommissioning services. Capabilities include but not limited to:



- Mechanical Integrity Management Services - including shutdown/turnaround campaigns
- Flange Management services - Bolting and Torquing, Bolt tensioning
- Inspection and certification of lifting and hoisting equipment with gear.
- Onshore / Offshore Fabrication and Offshore Installation Works with Construction Support
- Leak Repairs - Hot tap
- Fabric Maintenance Services (Blasting and Painting inclusive of PFP and surface preparation with UHP Spiderjet Deck blasting)
- Tank Inspections and Maintenance services (robotics and manual)
- Underwater inspections (Mini ROVs) etc.
- HVAC System Repair and Maintenance
- Non Destructive Testing Services (Conventional and Advanced)
- LACT Unit Maintenance/ Upgrade
- Oil/ Water separation
- Nitrogen Services
- Valve Maintenance services including wellhead maintenance etc.
- Crane Maintenance
- Asset verification and tagging

We also provide the following specialist services to reduce MRO costs: _____

Corrosion protection and repairs for risers, conductors, flowlines, and associated piping for harsh duty applications by advanced composite technology.

Pipeline Integrity Assessment for non-piggable buried pipelines to ascertain their integrity by non-intrusive means i.e., no excavation, de-coating, and interruption of operations.

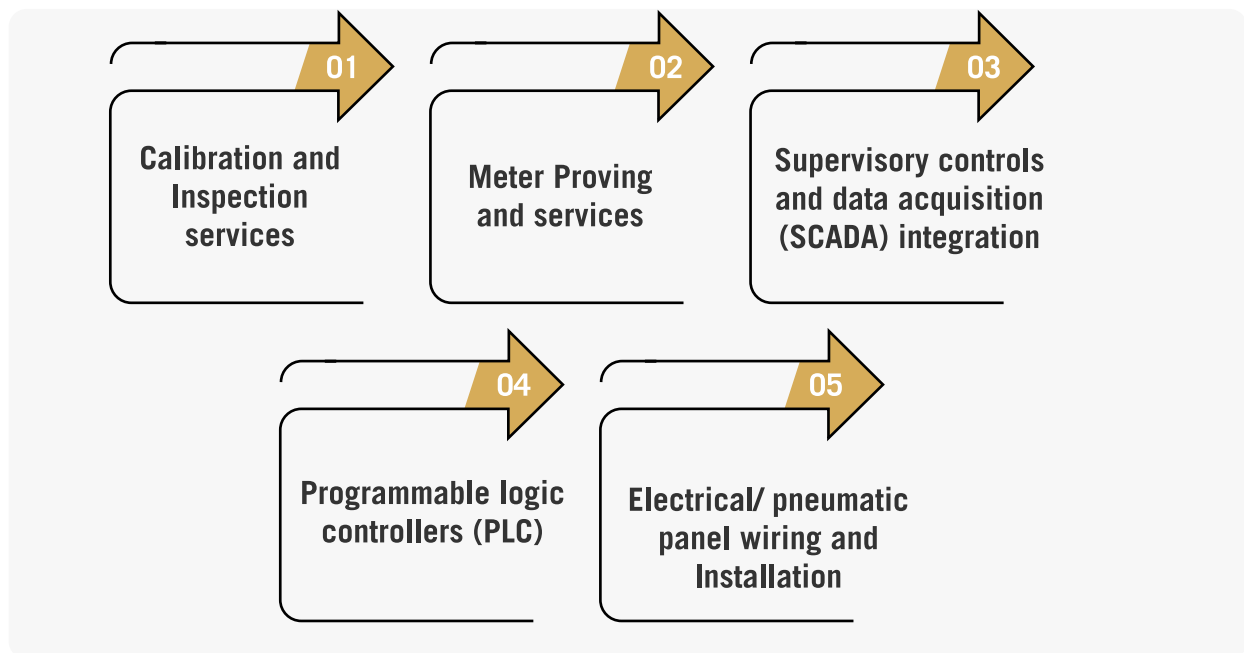
Paraffin (wax), asphaltene, scale and rust prevention and removal system and in oil and gas production and water systems.

Drone inspection services for detailed assessment of assets' true condition enabling evidence-based decisions





Instrumentation and Controls Services

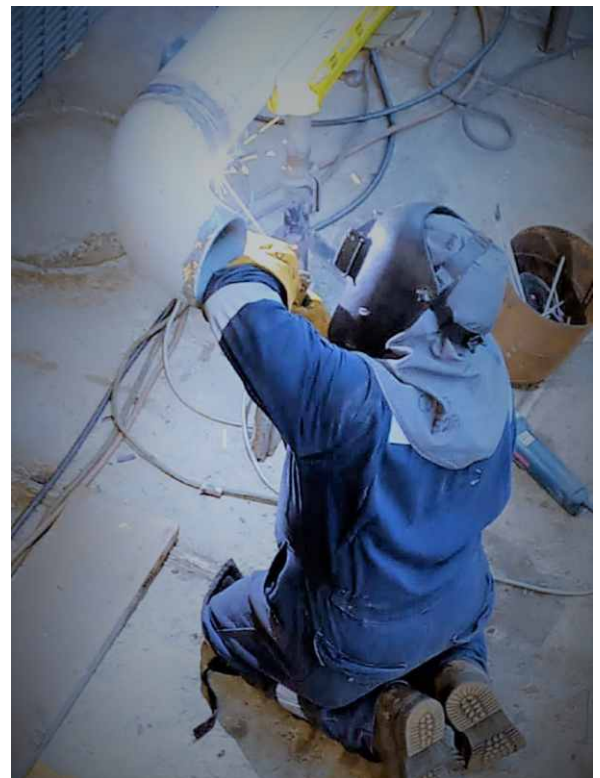


Technical Manpower Supply

We tend to all human resource needs to equip your operation – including personnel selection, recruitment and administration, for both direct hire and contract basis. With vast industry experience, our recruitment consultants will identify and source for the best fit candidates spanning a wide range of disciplines to enhance project delivery.

We also cover the supply of maintenance and technical skilled trade personnel including fitters, riggers, scaffolders, Habitat Technicians, combination welders, machinists, abseilers, painters /blasters, bolt tensioners, electricians, inspectors, deckhand, HVAC technicians, etc. for various maintenance support.

The synergy between organization of "services" and expertise of all manpower has led to excellent results in the selection and evaluation of each resource, thus allowing to provide the Customer with skilled and experienced specialists.

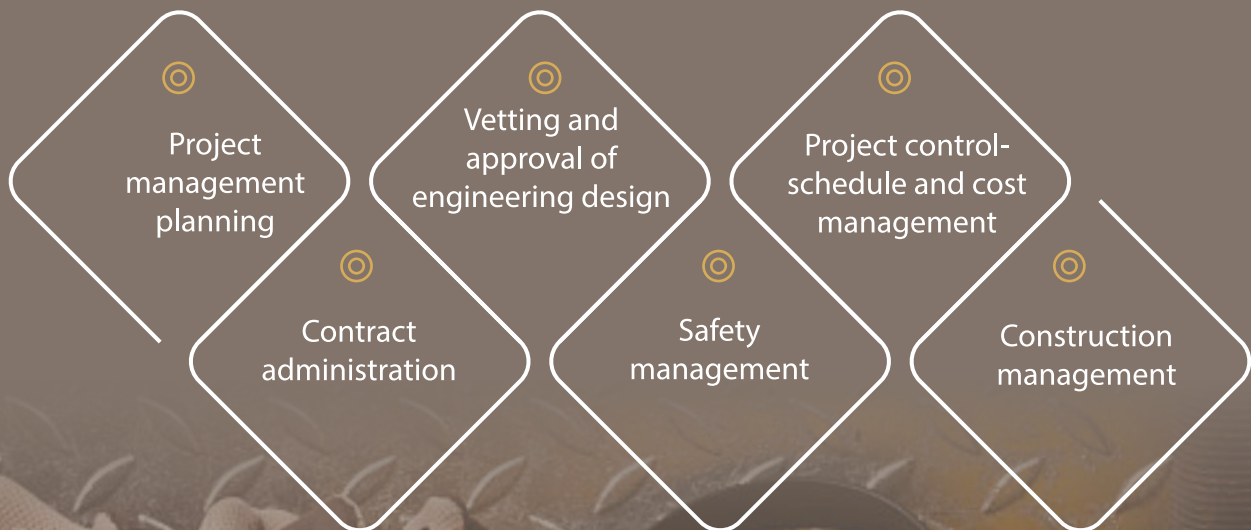




Project Management

With over 30 years of combined experience, we possess the knowledge and expertise to manage projects with exceptional efficiency and deliver on schedule. Our project management team with engineers ensure a balance between interface issues, cost, schedule, and quality deliverables – guaranteeing project success.

With the day-to-day management in our capable hands, you can focus on your core competences and reduce costs through more effective use of your human resources. Our project management services cover:

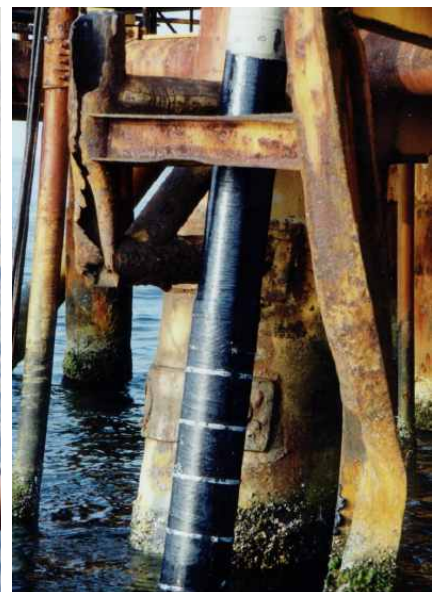


RiserClad® SPLASH ZONE PROTECTION

RiserClad® is a field applied, rigid composite, corrosion barrier for the splash-zones i.e., offshore platforms, FPSOs, marine structures, etc. It is composed of a rigid, fibreglass reinforced shell with our proprietary epoxy RiderBond®. RiserClad® provides tough long lasting corrosion protection for risers, conductors, flowlines and associated piping for harsh duty applications.



This unique, patented product can be installed offshore as a retrofit, with minimum inconvenience and expense. RiserClad®, based on advanced composite technology, is impact and abrasion resistant and will not be degraded by chemicals or UV light. As a result, it is long-lasting and eliminates periodic maintenance; making it the most cost effective and premier splash-zone corrosion protection system specified by major oil companies globally.



RiserWrap™ CORROSION BARRIER



RiserWrap™ is a flexible corrosion barrier made up of fibreglass cloth and propriety **RiderBond®** epoxy and is applied as a wet layup. RiserWrap™ can be applied to irregular shapes offshore, in the splash-zone, and even underwater as well as provide superior protection for soil/ air interfaces.



DynaGard® CORROSION PROTECTION FOR PIPE SUPPORT



DynaGard® is an easy to install, pipeline corrosion protection system specially designed to isolate the pipes from their support. It consists of a rigid, composite shell, fitted with a corrosion resistant, adhesive liner which features a very high bond strength adhesive that ensures a secure and lasting hold. At the point where a pipe meets a support, abrasion associated with pipe vibration or movement can wear away protective coatings over time. Without the benefit of a protective coating, the steel of the pipe is in direct contact with the steel of the support. A corrosion cell is created and the moisture or water that collects at the contact point, or crevice, accelerates corrosion. As a result, pitting or another loss of steel wall occurs, creating the potential for leaks and other hazards.

Unlike traditional wear pads that involves hot work or chemical mixing (glue), DynaGard® pipe saddles require no special tools or training to install, and it just takes a minute to peel off the protective release adhesive liner and stick it onto the pipe; allowing the corrosive-resistant composite shell to isolate the pipe and prevent damage caused by moisture penetration, movement due to expansion, and metal on metal contact with the pipe wear support.

With ease of installation and superior protection, the DynaGard® corrosion prevention system offers a fast and cost-effective solution to pipe corrosion, reducing maintenance costs by reducing the wear and tear brought on by typical pipe expansion and contraction.

ArmorGard® SEAMLESS COMPOSITE COATING FOR NEW CONSTRUCTION



ArmorGard®, a patented, seamless composite overlay is the perfect application for the protection of new construction from external corrosion. This durable and impact resistant composite holds up to mechanical and thermal stress generated by movements relative to the environment and the riser (both handling, transportation, installation, and service). ArmorGard® can be applied directly to the steel surface or on top of FBE or Inconel and can be expected to protect the steel substrate for the service life of the pipe.



Quality, Health, Safety and Environment (QHSE) Policy Statement

The long-term business success of Willoch depends on our ability to continually improve the quality of our services in order to enhance client satisfaction while protecting people and the environment.

Willoch's integrated QHSE Policy focuses on ensuring human health, operational safety, environmental protection, sustainable development and quality enhancement while meeting corporate social responsibility commitments guided by strict business ethics and transparency.

- We are fully committed to continuously improving our work processes in order to achieve the main objectives of this Policy, namely:
- Promote operational excellence and quality of services, focusing on customer satisfaction, within an environment of continuous process improvement
- Protect and strive for improvement of the health, safety, and security of our people incessantly, as well as foster best practices where possible to achieve zero workplace injuries, environmental incidents or quality non-conformances.
- Meet specified customer requirements and aim to build long-term loyalty while complying with applicable regulatory and industry standards.
- Minimize our impact on the environment through pollution prevention and reduction of natural resource consumption and emissions.
- Provide a safe work environment suitable for fostering innovation, knowledge management, and creative initiatives, as well as employees' integral well-being and quality of life.

Willoch's management is responsible for implementing this Policy. This will be achieved by:

- Communicating the Policy within the organization and making it available to all stakeholders while ensuring compliance.
- Providing our employees with the necessary resources, information, and trainings to fulfil the requirements of this Policy.
- Seeking feedback from our customers and identifying opportunities for improvements to our services.
- Assessing and measuring the performance and effectiveness of our Quality Management System.
- Fostering a habitual process adoption with an incident and injury free culture by rewarding outstanding QHSE performance.

Bawo Okoro
Managing Director





Block 25, Plot 9A, Water Corporation Drive
Oniru Royal Estate
Victoria Island, Lagos State
NIGERIA



+234 809 076 0471
+234 813 599 0820
+234 809 524 2680



info@willochtech.com



www.willochtech.com